



VĨNH HƯNG®



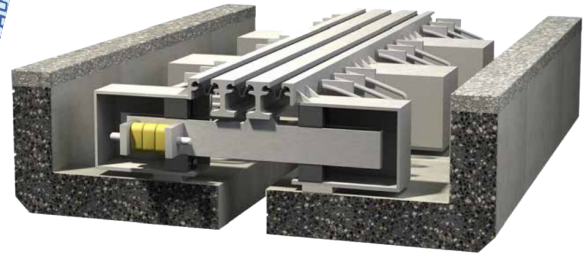
Vietnam Value

Proud to be

VIETNAM'S NATIONAL BRAND

VINH HUNG TRADING, CONSULTING
AND CONSTRUCTION JOINT STOCK COMPANY

MODULAR EXPANSION JOINT VHM



CERTIFIED
ISO 9001



0008

VHM MODULAR EXPANSION JOINT

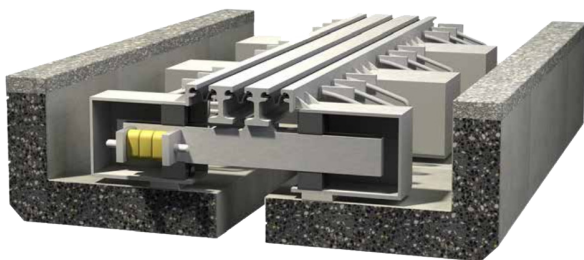
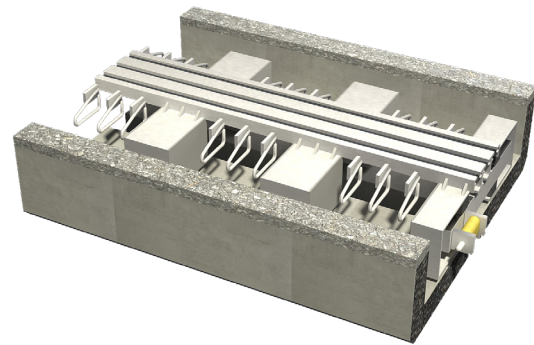
CERTIFIED
ISO 9001



0008

1. PRODUCT OVERVIEW

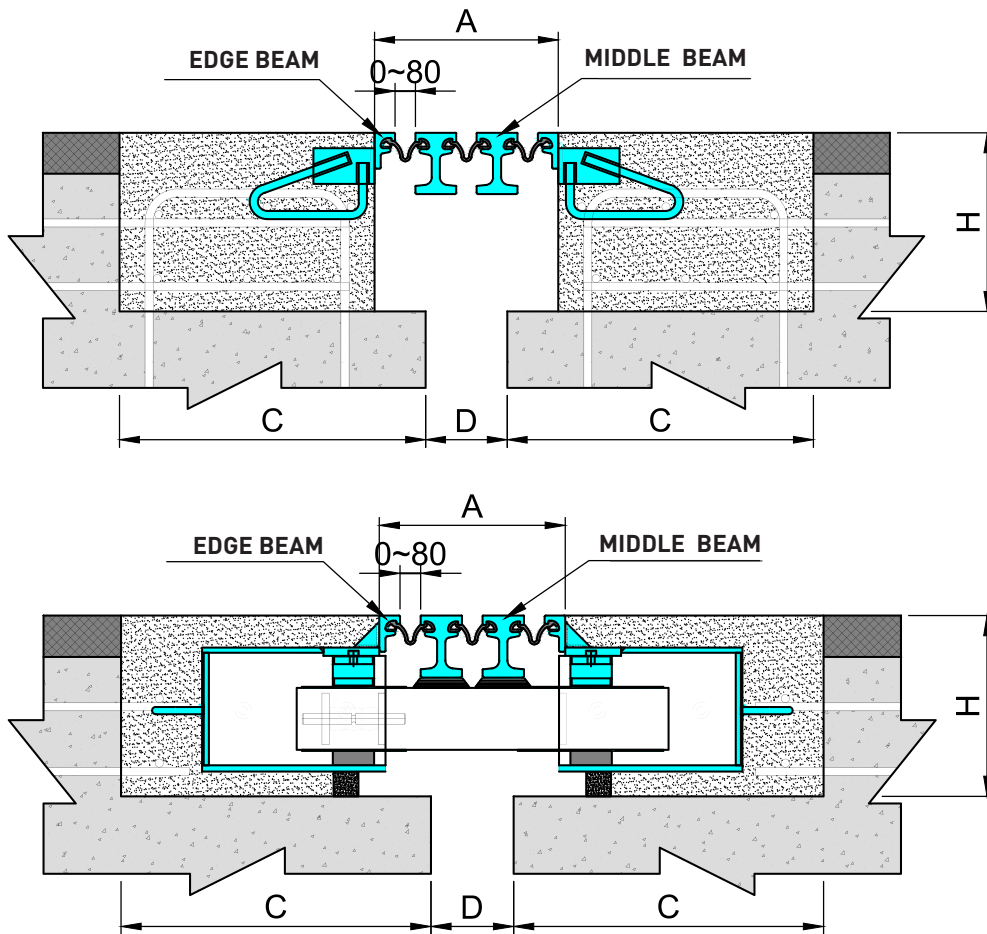
VHM joint made by Vinh Hung Investment and Production Company Limited (Vinh Hung IP) is composed of multiple steel rails in combination with supporting beams and special structural accessories. VHM - modular expansion joint accommodates to longitudinal movement from 160mm and above. Expansion joint is connected to the bridge deck through the anchoring reinforced system. Rubber seal serves as drainage trough and protect the system from dust and debris.



2. PRODUCT CHARACTERISTICS

- Design and manufacture according to AASHTO-LRFD, TCVN 11823 – 2017 standards.
- Allow longitudinal movement of up to 720mm, vertical and horizontal movements are in accordance with AASHTO standards.
- Be able to withstand high load with stable and durable structure.
- Ensure level and smooth surface for traffic.
- Each center beam is fixed with an independent supporting bar, which satisfies the requirement of the fatigue limit C (AASHTO 2007).
- Protected with high anti-corrosive coating layer and treated with anti-slip coating technology.
- Totally watertight.

3. TECHNICAL PARAMETERS

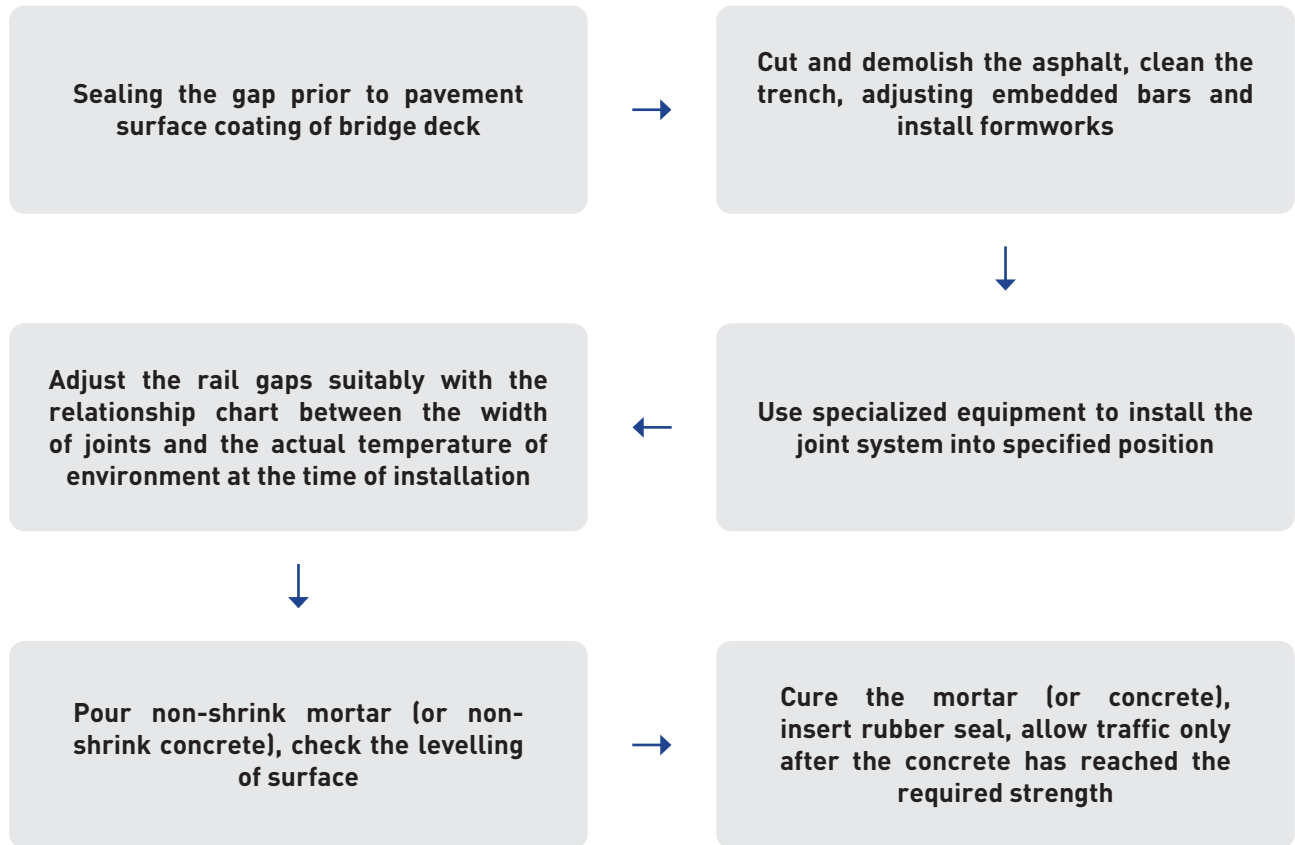


MODEL	DISPLACEMENT MM	A		C MM	D		H MM
		MM			MM		
		MIN	MAX		MIN	MAX	
VHM - 160	160	160	320	360	40	200	350
VHM - 240	240	240	480	420	40	280	350
VHM - 320	320	320	640	500	50	370	350
VHM - 400	400	400	800	580	50	450	350
VHM - 480	480	480	960	640	60	540	350
VHM - 560	560	560	1120	700	60	620	350
VHM - 640	640	640	1280	800	60	700	350
VHM - 720	720	720	1440	880	60	780	350

VHM MODULAR EXPANSION JOINT

6. INSTALLATION

Installation is critical to the lifespan of the expansion joints. Installation procedures should be implemented in strict compliance with the following steps:





**Installation VHM modular expansion joints
in Mo Nhat bridge project (Ba Ria - Vung Tau)**

**VINH HUNG TRADING, CONSULTING
AND CONSTRUCTION JOIN STOCK COMPANY**

HEAD OFFICE

Address: Lot BT2, No. 49, Bac Linh Dam Area,
Dinh Cong Ward, Hanoi City, Vietnam
Tel: +84 24 3540 1771 / +84 24 3540 2468

HO CHI MINH CITY BRANCH

Address: No. 12/18 Dao Duy Anh Street,
Duc Nhuan Ward, Ho Chi Minh City, Vietnam
Tel: +84 28 3526 4188

DA NANG REPRESENTATIVE OFFICE

Address: Room 303, Building No. 309 Nguyen Huu Tho Street,
Hoa Cuong Ward, Da Nang City, Vietnam
Tel: +84 236 367 3366

VINH HUNG INVESTMENT AND PRODUCTION COMPANY LIMITED

Address: Pho Noi Textile Industrial Park,
Duong Hao Ward, Hung Yen Province, Vietnam
Tel: +84 221 399 1399 / +84 221 399 1398

Website: vinhhungjsc.com
Email: info@vinhhungjsc.com

